

**CERTIFIED RECORD OF LAND CORNER MONUMENTATION**

**History of original corner establishment:**

The original corner was established by Robb & Gradon in 1881 under Contract No. 383, dated March 26, 1881.

**DIAGRAM**  
T10S R32E  
S1  
1/4---  
S12

**The original notes state:**

N 89°17' W on true line between sec 1 & 12  
40.31 Set stone 14x7x6 for 1/4 sec for from which  
A fir 10 ins dia bears N20°E 10 lks dist  
" " 8 " " " S55°W 44 " "

**Description of corner evidence found:**

Found no evidence of the original monument or bearing trees. The area has been severely disturbed by logging.

**Description of monument and accessories I establish to perpetuate the original location of this corner:**

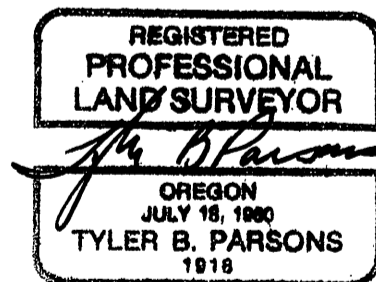
I reestablished this corner by single proportion. Set a 2 1/2 x 30" aluminum monument 20" in the ground in a mound of stone.  
An 8" Larch bears N29°25'E 23.1 ft, scribed 1/4S1BT.  
A 9" Larch bears S37°31'W 10.4 ft, scribed 1/4S12BT.

T10S R32E  
S1  
1/4---  
S12  
PLS1918  
1989

New BTs have 3/4" brass washers marked PLS1918 attached to the BT blaze, faces and bands painted with red tree marking paint, and BT tags and Land Survey Monument signs. A steel fence post with Land Survey Monument sign is driven approximately 3-5 feet from the corner.

Sun Cadastral Survey, 53-04H1-7-4011  
Project No. 8722LC  
Field Book: 8-16  
Work Accomplished: 9/2/89  
Witnesses: Louise Parsons

PARSONS SURVEYING  
1915 S.E. Stone Street  
Corvallis, OR 97333  
(503) 752-7515



Office of County Surveyor County of GRANT  
State of OREGON, I hereby certify that the within instrument was filed in this office  
for record on the 21 day of NOV, 19 89

Robert D. Baggett by \_\_\_\_\_  
(COUNTY OFFICIAL) (DEPUTY)